

## Flödesdelare

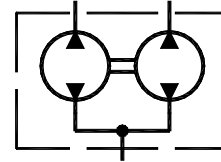
### Roterande flödesdelare grupp 1 - 2

Fast deplacement 1,2 - 40 cm<sup>3</sup>

Antal sektioner: 2 - 16

Roterande flödesdelare består av kugghjulsenheter som är mekaniskt förbundna med varandra.

Konstruktionen ger en mycket exakt flödesdelning mellan sektionerna.



**Serie KV-1DF  
KV-2DF**

#### KV1DF



Typ	Depl. cm <sup>3</sup>	Flöde l / min		Max $\Delta P$ mellan sektioner		Max tryck		R / min		Vikt Kg
		Min	Max			P1	P2	Min	Max	
KV1DF	1,17	1,44	3,24	180	220	220	270	1200	2700	0,97
	1,56	2,04	4,59							1,01
	2,08	2,64	5,94							1,03
	2,6	3,12	7,02							1,06
	3,12	3,84	8,64							1,09
	3,64	4,56	10,26							1,12
	4,16	5,16	11,61							1,17
	4,94	5,88	13,23							1,2
	5,85	7,08	15,93							1,26
	7,54	9,36	21,06	170	210	210	250	1,36		
9,88	11,76	26,46	160	200	200	240	1,5			

#### KV2DF



Typ	Depl. cm <sup>3</sup>	Flöde l / min		Max $\Delta P$ mellan sektioner		Max tryck		R / min		Vikt Kg
		Min	Max			P1	P2	Min	Max	
KV2DF	4,2	4,8	10	210	260	260	300	1200	2500	2,2
	6	7,2	15	210	260	260	300			2,3
	8,4	10,8	22,5	210	260	260	300			2,4
	10,8	13,2	27,5	210	260	260	300			2,5
	14,4	16,8	35	200	240	240	280			2,7
	16,8	20,4	42,5	200	240	240	280			2,8
	19,2	22,8	47,5	190	230	230	270			2,9
	22,8	26,4	55	180	220	220	260			3,05
	25,2	31,2	65	160	200	200	240			3,15
	30	36	75	160	190	190	230			3,4
	34,2	40,8	85	140	170	170	210			3,6
	39,6	48	100	130	160	160	200	3,8		

**P1 = Max arbetstryck**

**P2 = Max peak tryck**

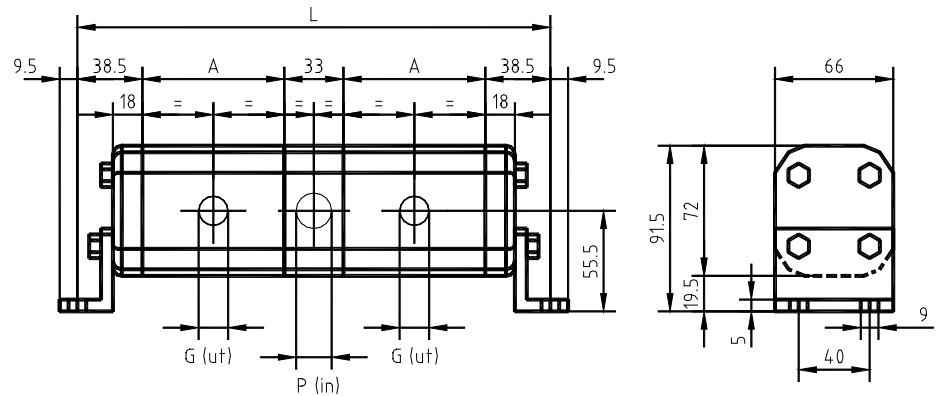
**Vid dimensionering av flödesdelare måste följande beaktas:**

Vid dimensionering av flödesdelare är det viktigt att man kontrollerar tryckdifferansen mellan sektionerna så att inte tillåten axelbelastning överskrides.

## Flödesdelare

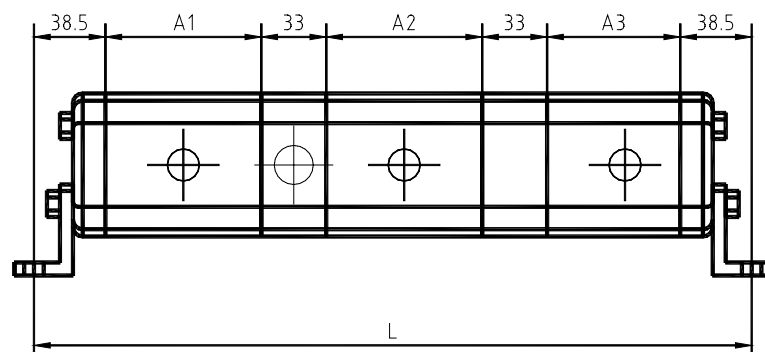
### KV1DF

Typ	A	G
KV1 DF/0.9	41,5	3/8" BSPP
KV1 DF/1.2	42,5	3/8" BSPP
KV1 DF/1.7	44	3/8" BSPP
KV1 DF/2.2	46	3/8" BSPP
KV1 DF/2.6	48	3/8" BSPP
KV1 DF/3.2	50	3/8" BSPP
KV1 DF/3.8	52	3/8" BSPP
KV1 DF/4.3	54	3/8" BSPP
KV1 DF/4.9	57	3/8" BSPP
KV1 DF/5.9	60,5	3/8" BSPP
KV1 DF/6.5	63	3/8" BSPP
KV1 DF/7.8	67	3/8" BSPP
KV1 DF/9.8	76	3/8" BSPP



#### Antal ingångsportar - P ( N x IN ) BSPP

Typ	ANTAL FLÖDESDELARE															
	2	3	4	5	6	7	8	9	10	11	12	13	14	15	16	
1DF/0.9	1x3/8"	1x3/8"	1x3/8"	1x3/8"	1x3/8"	2x3/8"	2x3/8"	2x3/8"	2x3/8"	2x3/8"	2x3/8"	3x1/2"	3x1/2"	3x1/2"	3x1/2"	
1DF/1.2	1x3/8"	1x3/8"	1x3/8"	1x3/8"	1x3/8"	2x3/8"	2x3/8"	2x3/8"	2x3/8"	2x3/8"	2x3/8"	3x1/2"	3x1/2"	3x1/2"	3x1/2"	
1DF/1.7	1x3/8"	1x3/8"	1x3/8"	1x3/8"	1x3/8"	2x3/8"	2x3/8"	2x3/8"	2x3/8"	2x3/8"	2x3/8"	3x1/2"	3x1/2"	3x1/2"	3x1/2"	
1DF/2.2	1x3/8"	1x3/8"	1x3/8"	1x1/2"	1x1/2"	2x3/8"	2x3/8"	2x3/8"	2x3/8"	2x3/8"	2x3/8"	3x1/2"	3x1/2"	3x1/2"	3x1/2"	
1DF/2.6	1x3/8"	1x3/8"	1x1/2"	1x1/2"	1x1/2"	2x3/8"	2x3/8"	2x3/8"	2x1/2"	2x1/2"	2x1/2"	3x1/2"	3x1/2"	3x1/2"	3x1/2"	
1DF/3.2	1x3/8"	1x3/8"	1x1/2"	1x1/2"	1x1/2"	2x3/8"	2x1/2"	2x1/2"	2x1/2"	2x1/2"	2x1/2"	3x1/2"	3x1/2"	3x1/2"	3x1/2"	
1DF3.8	1x3/8"	1x1/2"	1x1/2"	1x1/2"	1x1/2"	2x3/8"	2x1/2"	2x1/2"	2x1/2"	2x1/2"	2x1/2"	3x1/2"	3x1/2"	3x1/2"	3x1/2"	
1DF/4.3	1x1/2"	1x1/2"	1x1/2"	1x1/2"	1x3/4"	2x3/8"	2x3/4"	2x3/4"	2x3/4"	2x3/4"	2x3/4"	3x3/4"	3x3/4"	3x3/4"	3x3/4"	
1DF/4.9	1x1/2"	1x1/2"	1x1/2"	1x1/2"	1x3/4"	2x3/4"	2x3/4"	2x3/4"	2x3/4"	2x3/4"	2x3/4"	3x3/4"	3x3/4"	3x3/4"	3x3/4"	
1DF/5.9	1x1/2"	1x1/2"	1x1/2"	1x3/4"	1x3/4"	2x3/4"	2x3/4"	2x3/4"	2x3/4"	2x3/4"	2x3/4"	3x3/4"	3x3/4"	3x3/4"	3x3/4"	
1DF/6.5	1x1/2"	1x1/2"	1x3/4"	2x1/2"	2x1/2"	2x3/4"	2x3/4"	2x3/4"	2x3/4"	2x3/4"	2x3/4"	3x3/4"	3x3/4"	3x3/4"	3x3/4"	
1DF/7.8	1x1/2"	1x3/4"	1x3/4"	2x1/2"	2x1/2"	2x3/4"	2x3/4"	2x3/4"	2x3/4"	2x3/4"	2x3/4"	3x3/4"	3x3/4"	3x3/4"	3x3/4"	
1DF/9.8	1x3/4"	1x3/4"	1x3/4"	2x1/2"	2x1/2"	2x3/4"	2x3/4"	2x3/4"	2x3/4"	2x3/4"	2x3/4"	3x3/4"	3x3/4"	3x3/4"	3x3/4"	



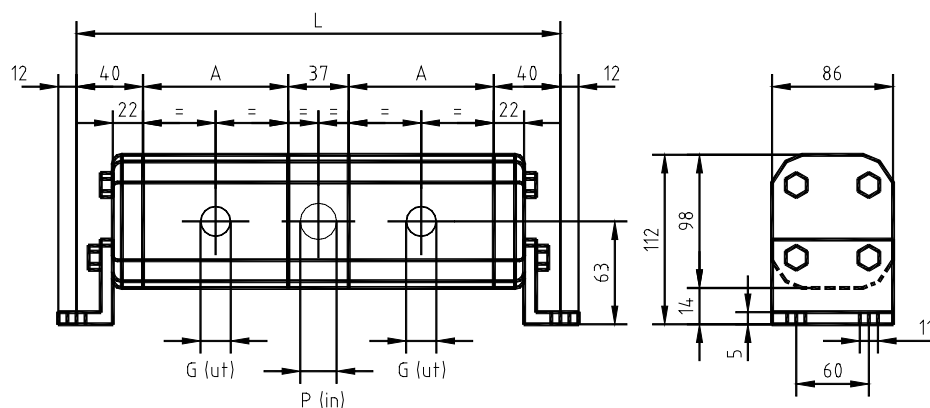
Totallängd (n = Antal flödesdelare)

Exempel :  $L = (n-1) \times 33 + 77 + A1 + A2 + A3 = (3-1) \times 33 + 77 + 54 + 54 + 54 = \underline{305 \text{ mm}}$

## Flödesdelare

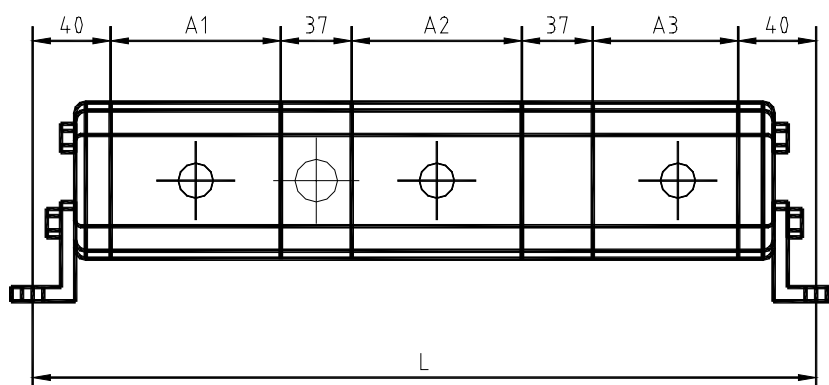
### KV2DF

Typ	A	G
KV-2DF/4	47	1/2" BSPP
KV-2DF/6	50	1/2" BSPP
KV-2DF/9	54	1/2" BSPP
KV-2DF/11	58	1/2" BSPP
KV-2DF/14	64	1/2" BSPP
KV-2DF/19	72	1/2" BSPP
KV-2DF/22	78	1/2" BSPP
KV-2DF/26	82	3/4" BSPP
KV-2DF/30	90	3/4" BSPP
KV-2DF/34	97	3/4" BSPP
KV-2DF/40	106	3/4" BSPP



Antal ingångsportar - P ( N x IN ) BSPP

Typ	ANTAL FLÖDESEDELARE															
	2	3	4	5	6	7	8	9	10	11	12	13	14	15	16	
2DF/4	1x1/2"	1x1/2"	1x3/4"	1x3/4"	1x3/4"	2x1/2"	2x3/4"	2x3/4"	2x3/4"	2x3/4"	2x3/4"	3x3/4"	3x3/4"	3x3/4"	3x3/4"	
2DF/6	1x1/2"	1x3/4"	1x3/4"	1x3/4"	1x3/4"	2x1/2"	2x3/4"	2x3/4"	2x3/4"	2x3/4"	2x3/4"	3x3/4"	3x3/4"	3x3/4"	3x3/4"	
2DF/9	1x3/4"	1x3/4"	1x3/4"	1x3/4"	1x3/4"	2x3/4"	2x3/4"	2x3/4"	2x3/4"	2x3/4"	2x3/4"	3x3/4"	3x3/4"	3x3/4"	3x3/4"	
2DF/11	1x3/4"	1x3/4"	1x3/4"	1x1"	1x1"	2x3/4"	2x3/4"	2x3/4"	2x3/4"	2x3/4"	2x3/4"	3x3/4"	3x3/4"	3x3/4"	3x3/4"	
2DF/14	1x3/4"	1x3/4"	1x3/4"	1x1"	1x1"	2x3/4"	2x3/4"	2x3/4"	2x3/4"	2x3/4"	2x3/4"	3x3/4"	3x3/4"	3x3/4"	3x3/4"	
2DF/17	1x3/4"	1x3/4"	1x3/4"	1x1"	1x1"	2x3/4"	2x3/4"	2x3/4"	2x3/4"	2x3/4"	2x3/4"	3x3/4"	3x3/4"	3x3/4"	3x3/4"	
2DF/19	1x3/4"	1x1"	1x1"	1x1"	1x1"	2x3/4"	2x3/4"	2x1"	2x1"	2x1"	2x1"	3x1"	3x1"	3x1"	3x1"	
2DF/22	1x3/4"	1x1"	1x1"	1x1"	2x1"	2x1"	2x1"	2x1"	2x1"	2x1"	2x1"	3x1"	3x1"	3x1"	3x1"	
2DF/26	1x1"	1x1"	1x1"	2x1"	2x1"	2x1"	2x1"	2x1"	2x1"	2x1"	1"	3x1"	3x1"	3x1"	3x1"	
2DF/30	1x1"	1x1"	2x1"	2x1"	2x1"	2x1"	2x1"	2x1"	2x1"	2x1"	2x1"	3x1"	3x1"	3x1"	3x1"	
2DF/34	1x1"	1x1"	2x1"	2x1"	2x1"	2x1"	2x1"	2x1"	2x1"	2x1"	2x1"	3x1"	3x1"	3x1"	3x1"	
2DF/40	1x1"	1x1"	2x1"	2x1"	2x1"	2x1"	2x1"	2x1"	2x1"	2x1"	2x1"	3x1"	3x1"	3x1"	3x1"	



Totalängd (n = Antal flödesdelare)

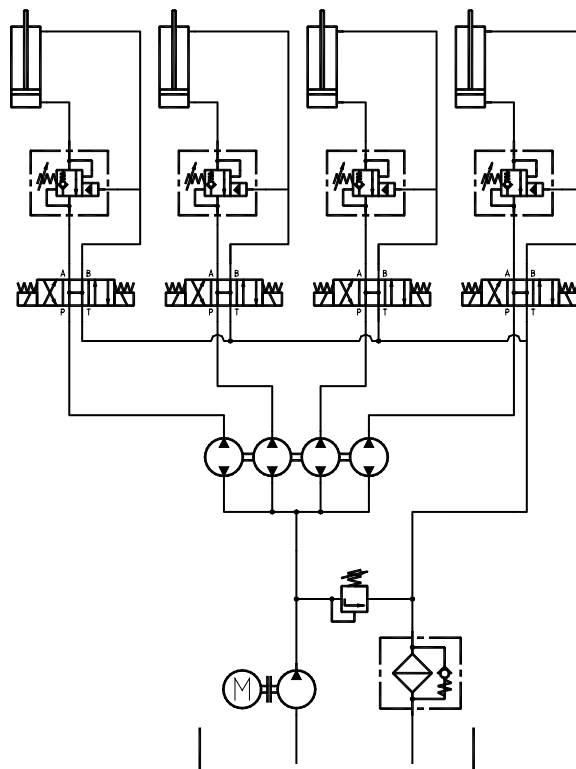
Exempel :  $L = (n-1) \times 37 + 80 + A1 + A2 + A3 = (3-1) \times 37 + 80 + 78 + 78 + 78 = \underline{388 \text{ mm}}$

## Flödesdelare

### Applikationsexempel

#### Ex 1.

Detta exempel visar en flödesdelare som fördelar olja till 4st cylinderkretsar som är oberoende av varandra. Med denna lösning behövs det inte ventiler som korrigerar/nollställer cylinderlägena. Cylindrarna är försedda med overcenterventiler (lasthållningsventiler) på +-sidan.



#### Ex 2.

Detta exempel visar en flödesdelare som fördelar olja till två olika kretsar med två olika flödesbehov.

